

DAS KAPITAL

Premiere: 25. October 2017, Fabriktheater Zurich, Switzerland

TECHNICAL RIDER

STAGE / LIGHT / SOUND

Produced by: Freies Musiktheater Zürich, Verein, c/o I. Komarov, Ritterstrasse 8, 8032 Zürich

Techn. Dir. & Lights: Marek Lamprecht // contact@mareklamprecht.de / +49 (0)179 213 9025
Sound: Rebecca Vonlaufen // revon@gmx.net / +41 79 387 51 54

This is a general Technical Rider.

Adaptions will be made for each venue.

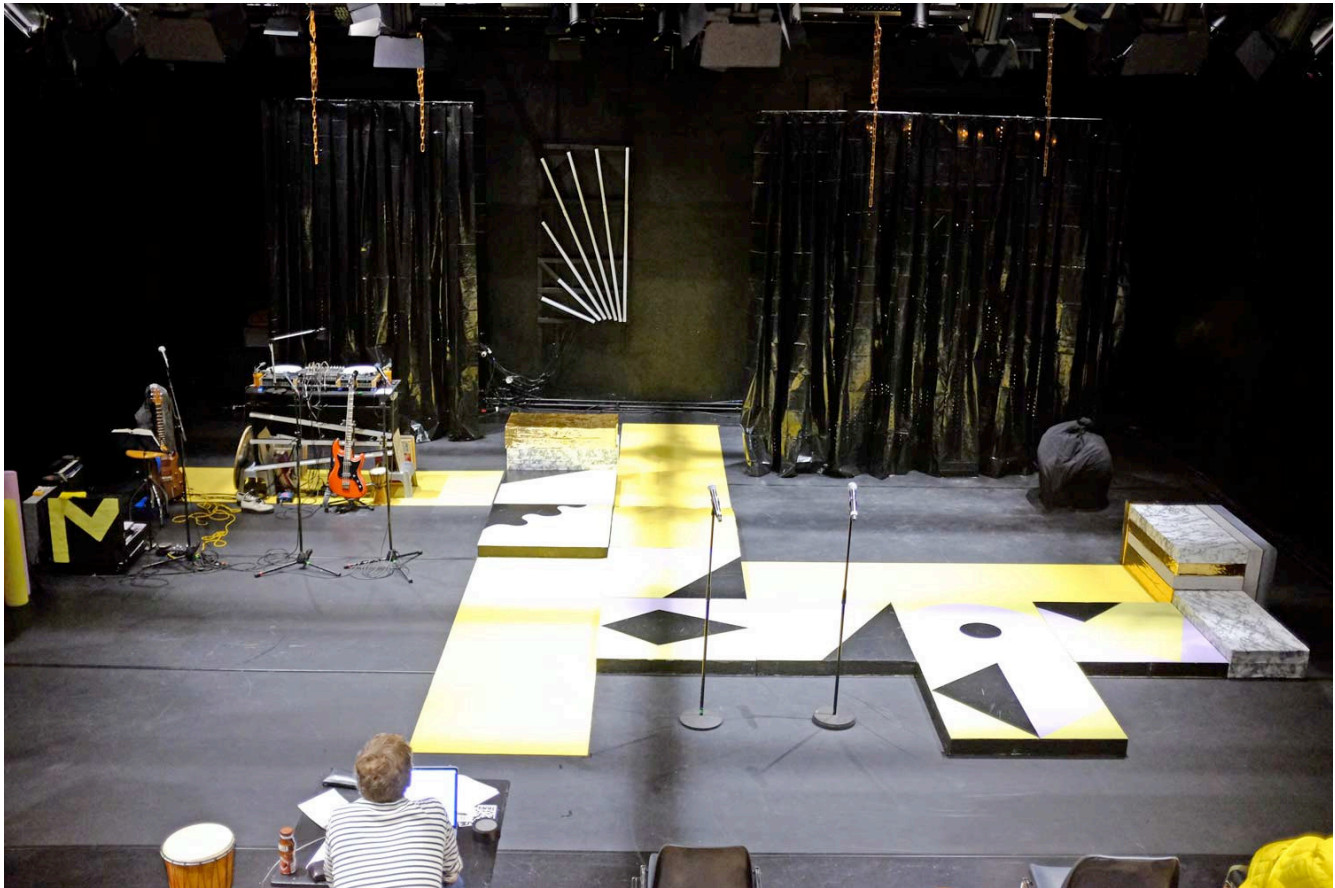
Please provide equipment lists and CAD plans of your venue (vwx preferred, dwg possible)

Do not hesitate getting in touch with us about every single detail of this Rider.

We are happy to find the best solution for your venue.

Travelling: 10 actors & musicians
1 light
1 sound

Attachment: 1 general plot containing stage, light and sound



STAGE

Dimensions	Min. 10 m width, 9 m depth, 4,50 m height
Floor	Black dancefloor throughout the whole space
Cloth	No legs or borders at all

The set basically consists of 2 plastic (PVC) curtains, several blocs made of styrofoam, covered with MDF panels, 3 yellow carpets, a light object (wooden frame with fluorescent tubes on it), and one mobile wall made of balloons filled with balloon gaz (not flammable).

No fire, cigarettes, smoke, haze, pyro etc.



LIGHT

See attached light plot.

Lightboard brought by the company.

Please provide 5-pole DMX at the tech desk and at the indicated position backstage.

We will bring 2 small extra dimmers for the fluorescents.

SOUND

PA & FoH:

The PA (incl. Subwoofer) must be adapted to the venue conditions and ensure a powerful sound spreaded equally all over the audience area. Our show is very dynamic. Possibility to reproduce 100dB distortion-free is crucial.

The board has to be a digital one with minimum 16 mono inputs. Yamaha QL1 preferred.

Please get in touch if you are considering an analog board!

Sound board cannot be located under or above a balcony.

We expect a competent sound technician before and during the performance who has a profound knowledge of the in-house sound system.

We usually do not need to edit the System Processing.

Observing the sound protection regulations (SLV: SR814.49, spec. logging) is in the responsibility of the presenter.

Monitoring:

3 powerful monitors, 1 on a stand.

1 separate 31 Band EQ for each Monitor Mixbus (3 channels in total).

Aux Busses (post fade):

Aux 1: Monitor wedge L

Aux 2: Monitor wedge R

Aux 3: Monitor wedge on Stand

Aux 4: Output Guitar Amp (on stage)

Aux Busses FX (post fade):

Aux 5: FX2 send, reverb, hall

Aux 6: FX3 send, vocal plate

Stage:

- Power: 230V, Type13 or Type23, **earthed!!!**
Position: SR
- We bring a guitar amp, that serves as sound source in one song.
- Enough XLR- and power-cables.

Technical Rider **KARL MARX. DAS KAPITAL ALS MUSICAL**

Audio patch list:

	Name Source	Mic	Stand	P48	Stage Position
1	Funk 1	Shure or Sennheiser WL	Straight Round Base		FoH
2	Funk 2	Shure or Sennheiser WL	Straight Round Base		FoH
3	Mix L	D.I.		x	SR
4	Mix R	D.I.		x	SR
5	Bass	D.I.		x	SR
6	Guitar	D.I.		x	SR
7	Mic 1	Shure SM 58 or Sennheiser	Tall Boom		SR
8	Mic 2	Shure SM 58 or Sennheiser	Tall Boom		SR
9	Mic 3	Shure SM 58 or Sennheiser	Tall Boom		SR
10	Turntable L	XLR Out		x	SR
11	Turntable R	XLR Out			SR
12	Funk 3	Shure or Sennheiser WL			FoH
13	FX Rev L				
14	FX Rev R				
15	FX Plate L				
16	FX Plate R				

LOGISTICS

We need 1 full day for set-up, soundcheck and rehearsals.

Working times between 10:00 and 22:00.

First performance on day 2.

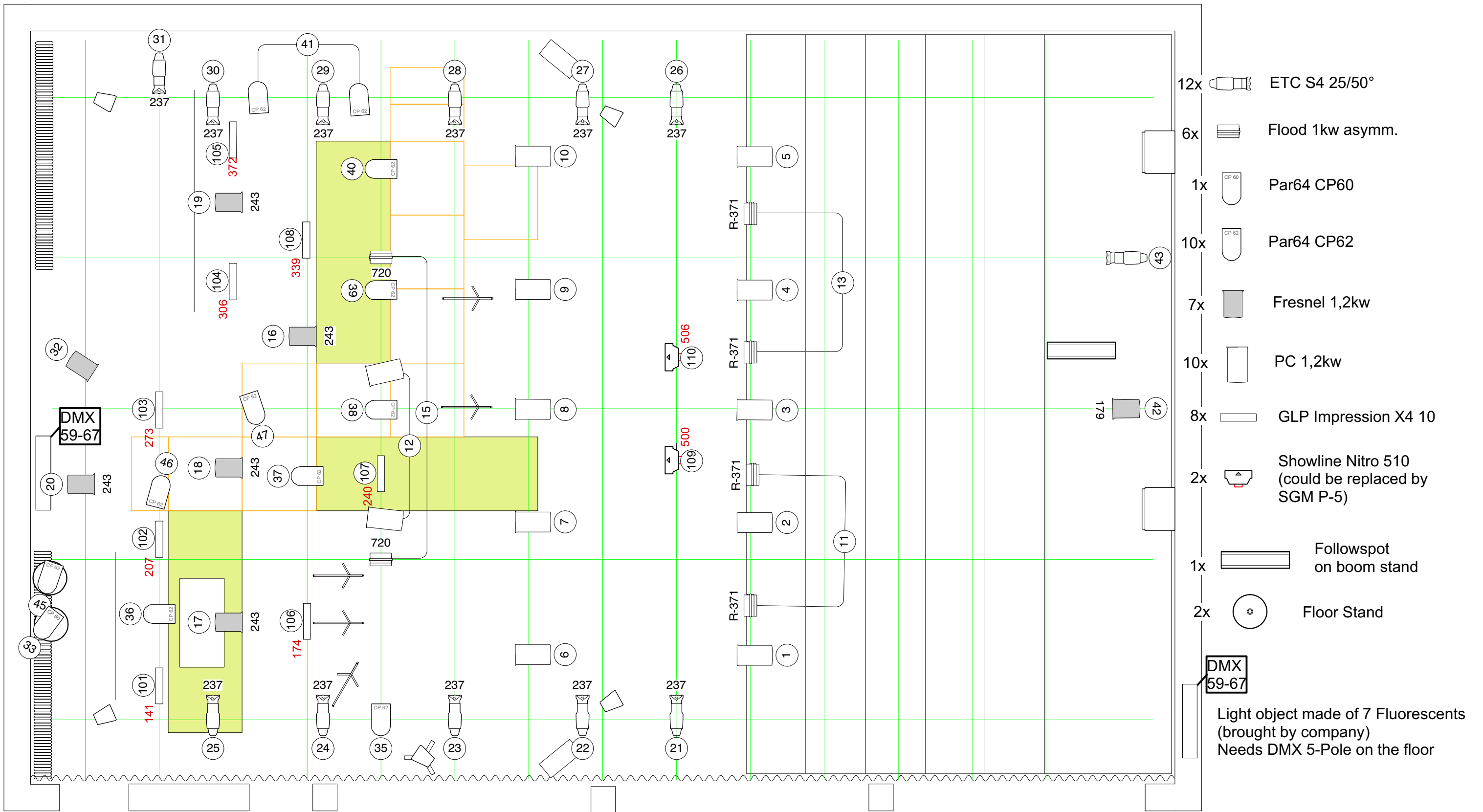
Strike after the last performance.

Crew 2x stage, 2x lights, 1x sound

Washing Possibility to wash, dry and iron costumes after each performance

Wardrobe 2 wardrobes: 5 male, 5 female, shower
Small catering during set-up, rehearsals and performances is highly appreciated

Parking Possibility to park a van



- 4x PA
- 2x Monitor on floor
- 2x SUB
- 1x Monitor on stand

Arnold / Komarov / Schröder		
karl marx. das kapital als musical		
REGIE: Michel Schröder		
BÜHNE: Silvia Buonvicini & Severin Hoffmann		
TON: Rebecca Vonlaufen		
LICHT: Marek Lamprecht		
Maßstab: 1:50	Datum: 20.09.2017	gezeichnet: ML